

# Newtech Co.,Ltd. Company Profile

## Corporate Data

<b>Company Name</b>	Newtech Co., Ltd.
<b>Headquarters</b>	KDX-Bldg, 2-7-19 Hamamatsucho, Minato-ku, Tokyo 105-0013 Japan
<b>Founded</b>	March 1982
<b>Capital</b>	496 Million Yen (Stock Issued : 2,081,000)
<b>Business</b>	Storage & Solution
<b>Stock Exchange Listings</b>	JASDAQ Standard (Stock Ticker Code : 6734)
<b>Main Bank</b>	The Bank of Tokyo-Mitsubishi UF J, Ltd., Mizuho Bank, Ltd. Resona Bank, Limited., Sumitomo Mitsui Banking Corporation The Chiba Bank, Ltd., The Shoko Chukin Bank, Ltd.
<b>Chairman</b>	Yasuhito Kasahara
<b>President &amp; CEO</b>	Hirofumi Yanase
<b>Annual Revenue</b>	2,827 Million Yen (February 2019)
<b>ISO Certifications</b>	ISO9001 ISO14001 ISO27001



FS 540286/ISO 9001

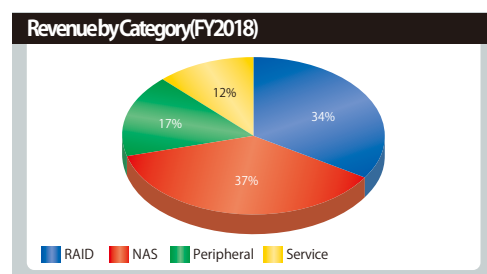
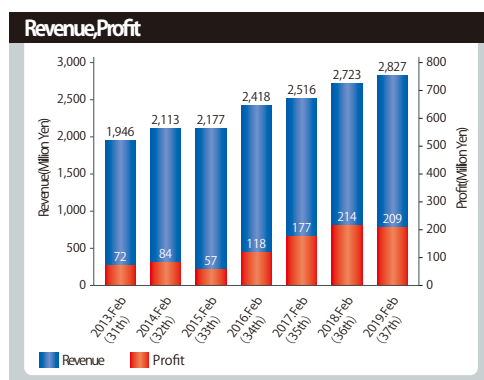


EMS 540287/ISO 14001

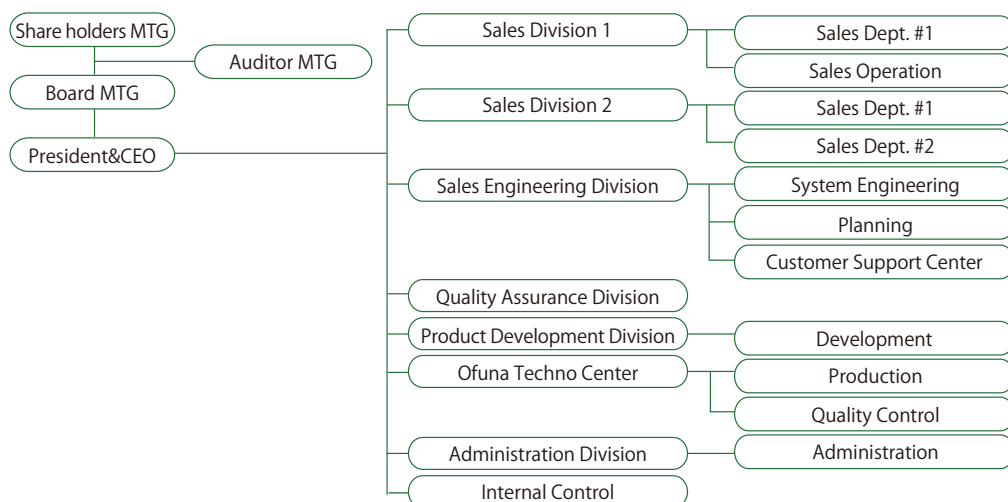


IS 530606/ISO 27001

**Group Company** IT Storage Service Corp.



## Organization



# Business Area

## Surveillance

Vess A series



Ness series



## HPC

Cloudy NAS/GLS



SweeperStor III



Supremacy III



## OEM/ODM

Mirroring unit



Ness series



Mirroring card



QBOX-Mirror



## Data center



## Rich content

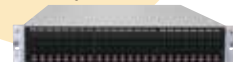
Pegasus series



JBOX-pro



Cloudy III Plus



## IT arcserve® Quest

Cloudy series



SmartNAS



OBOX-mini



## Cloud

Cloudy backup



Windows Azure



# Location

[Head Office]  
 KDX-Bldg, 2-7-19 Hamamatsucho, Minato-ku, Tokyo  
 105-0013 Japan  
 • Sales Division  
 TEL : 03-5777-0852  
 FAX : 03-5777-0853

• Administration Division  
 TEL : 03-5777-0888  
 FAX : 03-5777-0881



[Ofuna Techno Center]  
 1085-1 Yamasaki, Kamakura-shi, Kanagawa Pref.  
 247-0066 Japan  
 TEL : 0467-42-3831  
 FAX : 0467-42-3832

